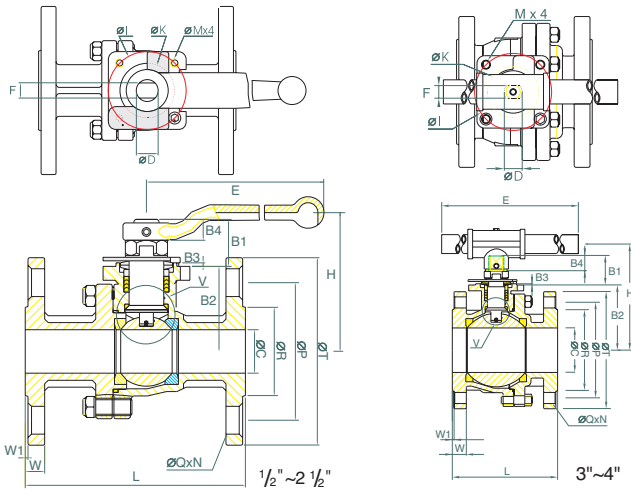




## STAINLESS BALL VALVE - 2 Piece Flanged CL 150

### SPECIFICATIONS - SERIES 90

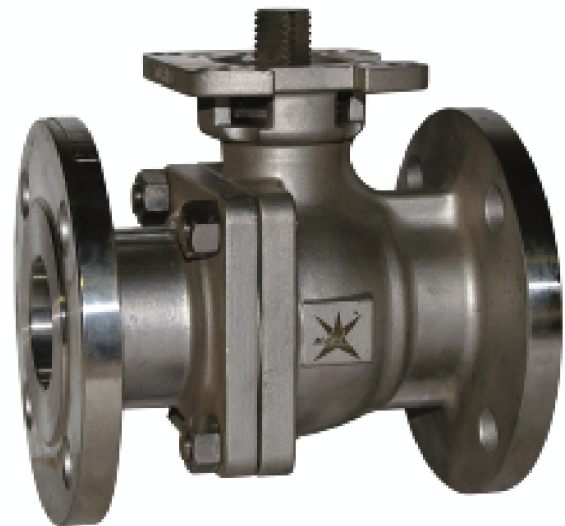
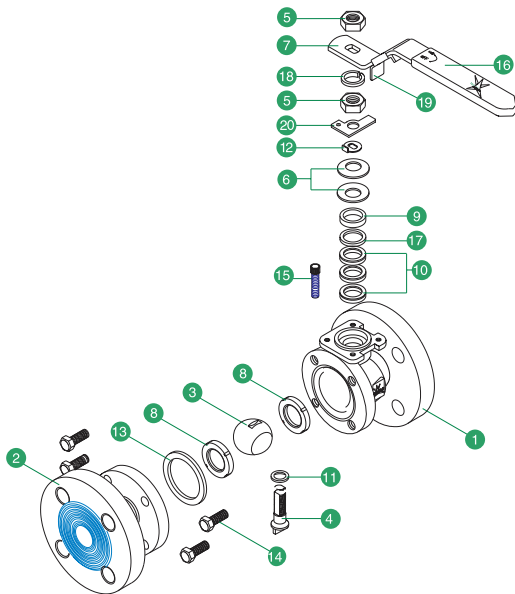
Design to ANSI B16.34, BS 5351, DIN 3337  
 Investment Casting  
 Blow-out proof system, Anti-static device  
 Full Bore 2 piece body construction  
 Test and Inspection to API598



### MATERIALS OF CONSTRUCTION

Nº	Part Name	Material	Qty
1	Body	ASTM A351 Gr. CF8M	1
2	End Cap	ASTM A351 Gr. CF8M	1
3	Ball	SUS 316	1
4	Stem	SUS 316	1
5	Stem Nut	SUS 304	2
6	Belleville Washer	SUS 301	2
7	Handle	SUS 304	1
8	Seat	RPTFE	2
9	Gland	SUS 304	1
10	V-ring Packing	PTFE	5
11	Stem Seal	RPTFE	1
12	Lack Saddle	SUS 304	1
13	Joint Gasket	PTFE	1
14	Bolt (Stud & Nut)	SUS 304	*
15	Stop Pin	SUS 304	1
16	Handle Sleeve	Vinyl	1
17	Gland Packing	25% RTFE	1
18	Washer	SUS 304	1
19	Locking Device	SUS 304	1
20	Locking Plate	SUS 304	1

5 1/2" to 3/4", 1 set of v-ring packing consists of 2 pcs of v-ring  
 1" to 4", 1 set of v-ring packing consists of 3 pcs of v-ring  
 \* For 1/2" to 3" - 4 pcs of bolt; For 4" 8pcs of bolt (150LBS)  
 For 1/2" to 2 1/2" - 4 pcs of bolt; For 3" to 4" 8pcs of bolt (PN16)  
 For 1/2" to 2" - 4 pcs of bolt; For 2 1/2" to 4" 8pcs of bolt (PN40)



### DIMENSIONS (in mm)

SIZE	B1 + 0.5	B2	B3	B4 + 1.5 / 0.5	ØC	ØD	E	F	H	ØI	ØK	L	M	N	ØP	ØQ	ØR	ØT	W	W1	W(kg)	ISO5211
1/2"	22.4	34.5	1	9.8	15	11.1	165	8.0	60.6	42	30	108.3	M5(10-24UNC)	4	60.5	16	35.1	88.9	11.2	1.6	1.69	F04
3/4"	21.4	41.1	1	8.8	20	11.1	165	8.0	67.21	42	30	117.3	M5(10-24UNC)	4	69.9	16	42.9	98.6	11.1	1.5	2.1	F04
1"	26.5	49.5	2	9.6	25	14.3	200	9.7	82.9	50	35	127.0	M6(1/4"-20UNC)	4	79.2	16	50.8	108	11.2	1.6	3.02	F05
1 1/2"	34.8	78.3	2	14.8	38	19.0	250	12.0	115.3	70	55	165.1	M8(5/16"-18UNC)	4	96.8	16	73.2	127	14.3	1.6	6.17	F07
2"	34.8	86.4	2	14.8	50	19.0	250	12.0	123.4	70	55	178.3	M8(5/16"-18UNC)	4	120.7	19	91.9	152.4	15.9	1.6	8.7	F07
2 1/2"	34.8	97.4	2	14.8	65	19.0	250	12.0	134.4	70	55	190.3	M8(5/16"-18UNC)	4	139.7	19	104.6	177.8	17.6	1.6	13.62	F07
3"	46.0	107.4	2	21.8	80	24.0	354	15.0	176.5	102	70.0	203.5	M10(3/8"-16UNC)	8	152.4	19	127	190.5	19.1	1.6	18.58	F10
4"	45.5	122.4	2	21.8	100	24.0	354	15.0	191	102	70.0	229.5	M10(3/8"-16UNC)	8	190.5	19	157.2	228.6	23.9	1.6	29.5	F10